

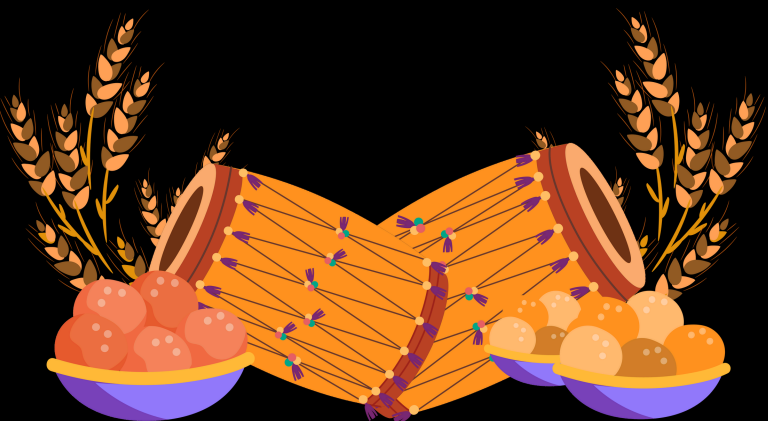


ABY'S

BIRYANI

Invest in the Taste of Success: ABYs Franchise Opportunity

BUSINESS PLAN





Welcome to ABY's

ABY's proven business model.

- Started in 2021 with just £18
- 1st Branch opening in August 2022
- 2nd Branch opening in Dec 2022
- Currently successfully operating five branches.
- 400% growth within 2 years

200K+
Customer

05
Branch

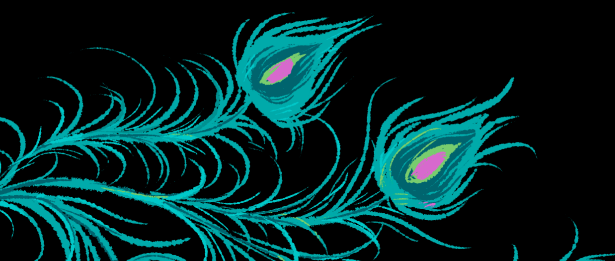
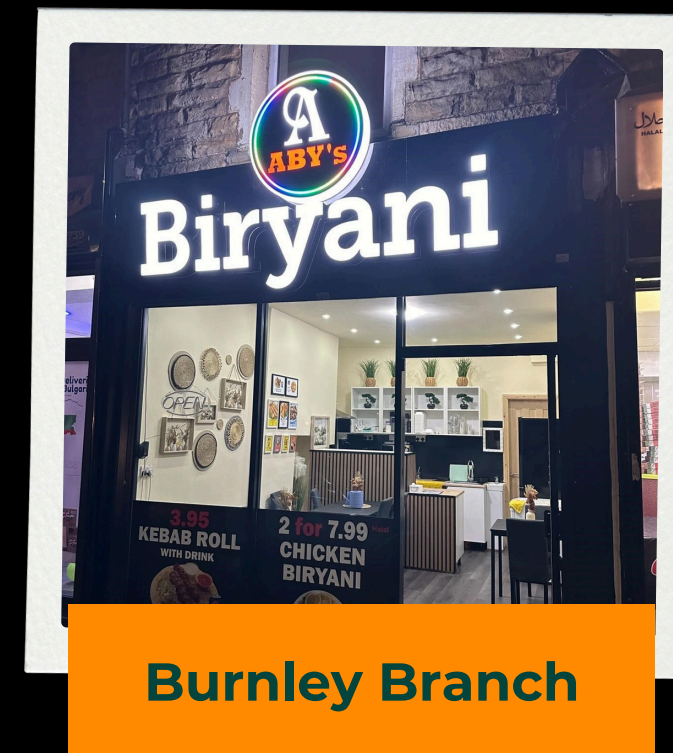
99%
Happy Customer





Investment only 26k

Equipment	3000
Marketing	3000
Sign Board & Menu	3000
Furniture (Table & Chairs)	2000
Interior Decoration	2200
Electric/Fitting/Plumbing	1800
POS Terminal+Printer	500
Stock before opening	3000
Franchise Fee	7500



Franchise Support

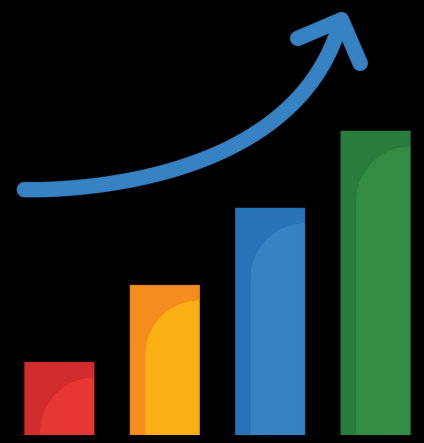
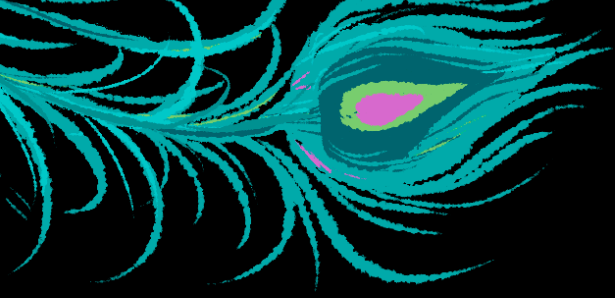
- Pre-Launch:

- Site selection assistance
- Shop setup
- Staff training
- Franchise Operational Model

- Post-Launch:

- Pre-cooked Ready to sale food
- Marketing campaigns
- Operational guidance
- Continuous training programs



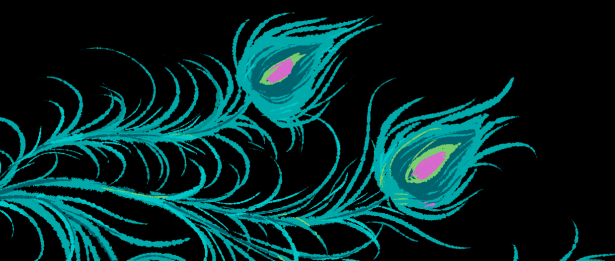


Monthly Profit & Expenses

Profit

Weekly Sales	Monthly Profit	Shop Rent	Variable
3500	4000	Marketing	300
4000	5000	Internet / Phone Line	40
5000	6000	Electricity	250
6000	7000	Bin Service	100
		Business Rates/Tax	0
		Salary of Staff	Variable
		Point of Sale	30
		Royalty	300

Note: Breakeven point can be achieved at 380 sale per day.



Franchise Benefits

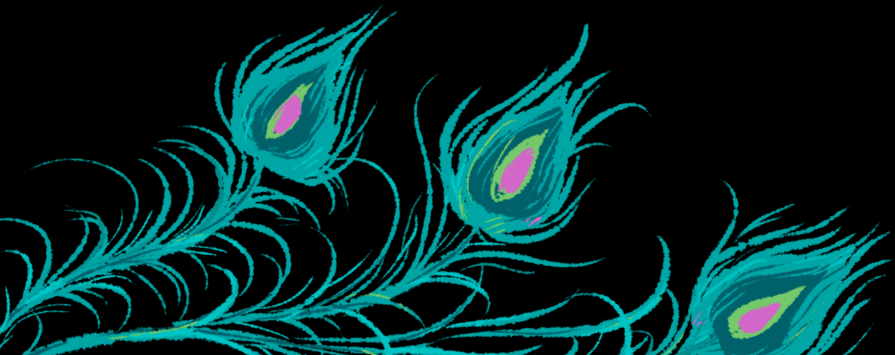
- High Return on Investment
- Ready to sale food
- Delivery of products on daily basis
- Focus only on Customer Services

Monthly Return on Investment:

Weekly Sale
4000

Monthly Profit
5000

Investment return in six months depends on sale.





ABY'S

OUR DIGITAL SUPPORT SYSTEM

Our recentalised ePOS and ERP system will help you monitor and control your sales, assests and finances more easily and effeciently.

This will enable you grow fast and focus more on success.





GET IN TOUCH



+44 7770 858543



WWW.ABYSBIRYANI.COM



HELLO@ABYSBIRYANI.COM



201 WILMSLOW ROAD, M14 5AQ
MANCHESTER, UK.

